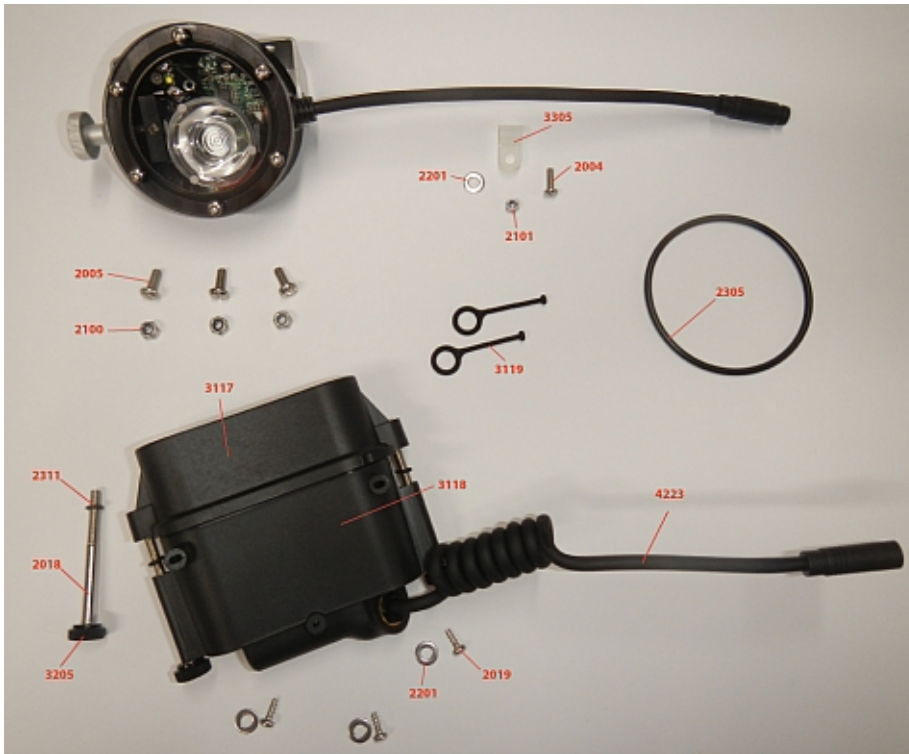


SCURION® - Assembling Guide



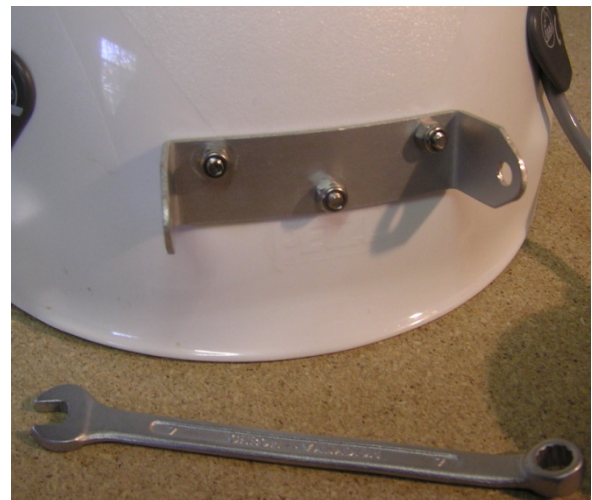
The Assembling set contains:

- 3 shorter screws for the fixation of the lamp holder on the helmet,
- 3 shorter screws with plates for the attachment of the battery case,
- 1 plastic fixation with corresponding screw for the fixation of the lamp cable.
- 1 spare o-ring seal for the battery case,
- 1 spare screw for the battery case,
- 1 connector that attaches the lid to the battery case + 1 spare.

We recommend leading the lamp cable on the inner side of the helmet. In that way the connector is well protected.



Prepared drillings for the lamp holder



Mounted lamp holder

How you can attach the lid to the case...

