

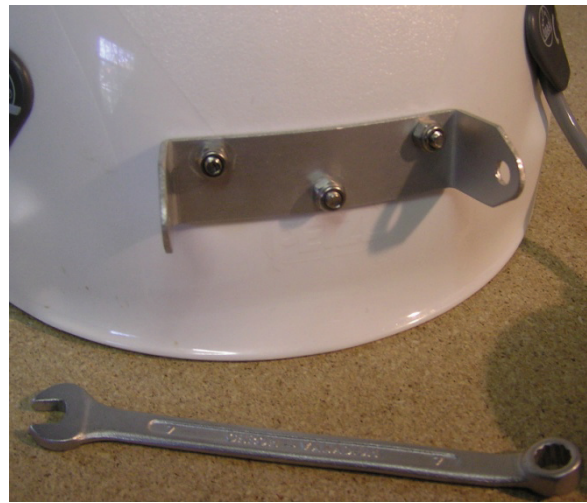


The Assembling set contains:

- 2 pairs of longer screws (25mm and 30mm) for the attachment of the battery case,
- 3 shorter screws for the fixation of the lamp holder on the helmet,
- 2 plastic fixations with corresponding screws for the fixation of the lamp cable.



Prepared drillings for the lamp holder



Mounted lamp holder



Battery case (for battery modules)

The Diving-Scurion® is delivered fully assembled and tested – i.e. head and battery casing are connected.

ATTENTION: do not disassemble the cable otherwise you would lose this guarantee!